

Plasson Series 1 Universal Adaptor

The Answer for Every Emergency



2023



Plasson Series 1 Universal Adaptor

is able to connect PE pipe to all common metal and plastic pipes.

Whether your existing pipe is copper, lead, galvanized steel, PVC or polyethylene, the Series 1 Universal Adaptors will make an immediate repair.

Plasson Series 1 Universal Adaptors are available to cover the entire OD size range of 14mm to 35mm.



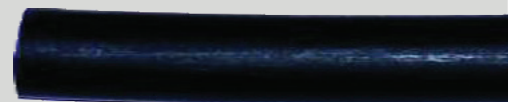
Copper



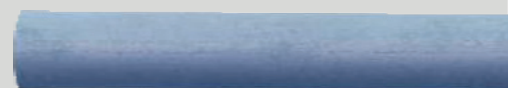
Lead



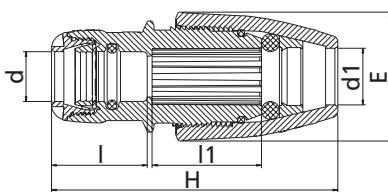
Galvanized



Polyethylene



PVCu



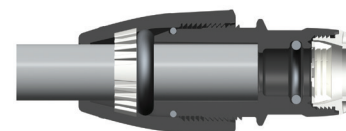
Size dxd1	H	E	I	I1	UB	UC	W
25 x 14-18	117-137	54	48	47	5	180	130 g
25 x 19-22	119-130	57	48	47	5	150	140 g
25 x 24-28	130-142	66	48	55	5	120	180 g
25 x 31-35	150-158	76	48	62	5	70	240 g
32 x 19-22	127-138	57	55	47	5	120	170 g
32 x 24-28	135-147	66	55	55	5	100	210 g
32 x 31-35	153-161	76	55	60	5	70	260 g

UB = Units per bag | UC = Units per carton | W = Weight in grams

Pipe		Universal Fitting Size Range (mm)			
Type	Standards	14-18 (mm)	19-22 (mm)	24-28 (mm)	31-35 (mm)
Nominal Size (DN)					
PE : Metric	ISO 4427, EN 12201, AS 4130	16	20	25	32
PE : Imperial , IPS	BS 1972 , ASTM D 3035	-	1/2"	3/4"	1"
PE : Normal gauge	IS 132	1/2"	-	3/4"	1"
PE : Heavy gauge	IS 132	3/8"	1/2"	3/4"	1"
PE : CTS	ASTM D 2737	1/2" , 5/8"	5/8"	1"	1 1/4"
PE : Rural	AS 2698	-	19 (3/4")	-	-
PE : Australia- Imperial	AS 4130, Series 3	-	15	20	1"
Copper: UK, EN	BS 2871, EN 1057	14,15,16,18	22	28	35
Copper : Irish, NZ	EN 1057, NZS 3501	14.7	21	27.4, 1"	32 (1 1/4)"
Copper : Australia	AS 1432	-	20 (3/4")	25 (1")	32 (1 1/4)"
PVC : Metric	ISO 4422, EN 1452	16	20	25	32
PVC : Imperial	BS 3505	3/8"	1/2"	3/4"	1"
PVC : Australia	AS 1477	10	15	20	25
Steel , Galvanized steel	ASTM A 106, BS/EN 10255	3/8"	1/2"	3/4"	1"
PB , Metric	ISO 15876	16	20	25	35
PB ,UK	BS 7291-2, table 1	15, 18	22	28	35
PE-X, Metric	ISO 15875	16	20	25	35
PE-X, UK	BS 7291-3, table 1	15,18	22	28	35
Lead, UK		-	1/2" 6 lb	-	3/4" 11 lb

Series 1 Universal Adaptor - Installation Instructions

- Cut pipe square and deburr as necessary.
- Select correct fitting according to the pipe outer diameter.
- Slide the fitting (universal side) onto the pipe, until pipe stop is reached.
- While holding the fitting body with a wrench, use another wrench to tighten the nut.
- Assemble the metric PE pipe according to Series 1 fitting instructions.



Note: If the fitting is reused, make sure metal teeth are present in the universal split ring.



* For further information regarding dimensions, suitable pipes and assembly instructions please scan the code.